

The High Rock

by Select Homes, Inc.

Village 707



3 Bedroom • 2 Bath Home (3-5 bedrooms)

- Open Concept Kitchen Living Area
- Modern Kitchen Appliance Options & Deluxe Cabinets
- Double Sinks in Master Suite Bath
- Master Suite with Tile Shower & Luxury Tub
- Laundry/Utility Room with convenient “drop zone”
- Deluxe Ambient Lighting Throughout
- Bonus Room with Open Stairway

SELECT HOMES, INC.
Office 866-624-7457

153 Blaise Church Rd
Mocksville, NC 27028-4103

~~~~~  
Building local family homes for  
over 30 years. Since 1984.

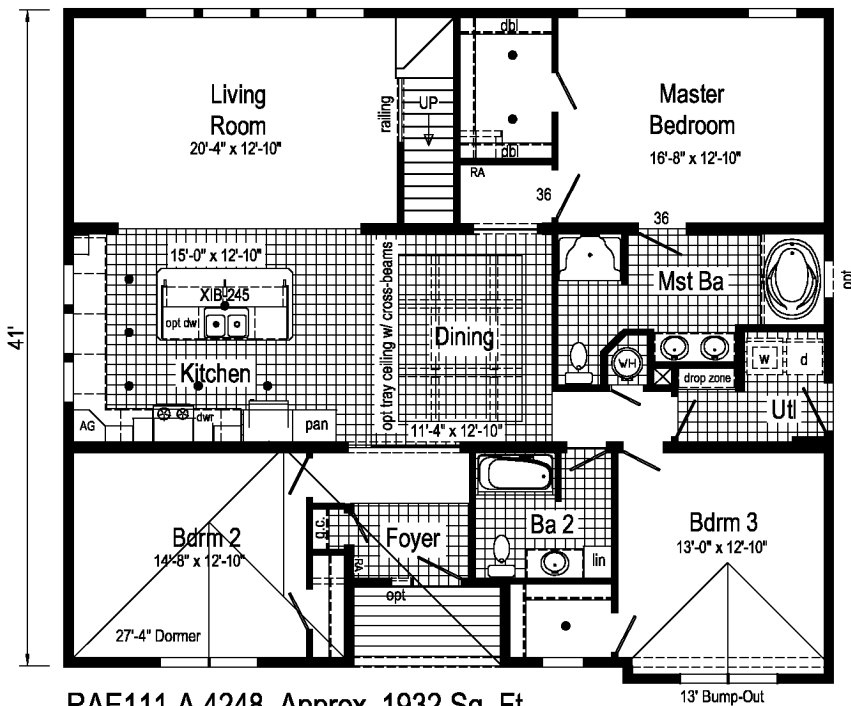
True Modular™ Homes

[www.selectmodular.com](http://www.selectmodular.com)

# Village 707



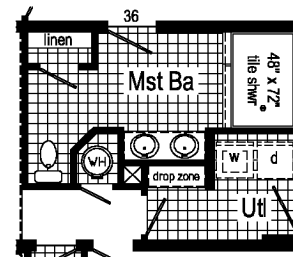
The High Rock is the ultimate open concept floor plan with new upscale features like a master bedroom ensuite with luxury tub, tile shower, and double sinks. The laundry room features a convenient new “drop zone”. Adding extreme value is a bonus room for your growing needs. It can be bedrooms or leave as is for storage. Whether it’s for one or two people or a large growing family, The High Rock is designed for your lifestyle.



RAE111-A 4248 Approx. 1932 Sq. Ft.

Plan standard with  
7/12 roof pitch

True Modular™  
Means Better Built



Optional 4' x 6'  
Walk-In Tile Shower

Baxter



Factory Model Center 866-624-7457